



Idaho Cleanup Project Update

Connie Flohr, Manager
Idaho Cleanup Project

May 12, 2021

Leadership In Nuclear Energy Commission



EM Environmental Management

safety ❖ performance ❖ cleanup ❖ closure

Idaho Cleanup Project

COVID-19 Impacts to Cleanup Efforts

Updates

- DOE issued COVID-19 Workplace Safety Plan March 2021
 - Masks mandatory
 - Building occupancy limits

Impacts

- Reduced efficiency: social distancing, barriers, quarantines

Progress

- Continuing spent nuclear fuel transfers as scheduled
- Meeting transuranic waste shipping per WIPP schedule
- IWTU Outage



Highlights Since January 2021

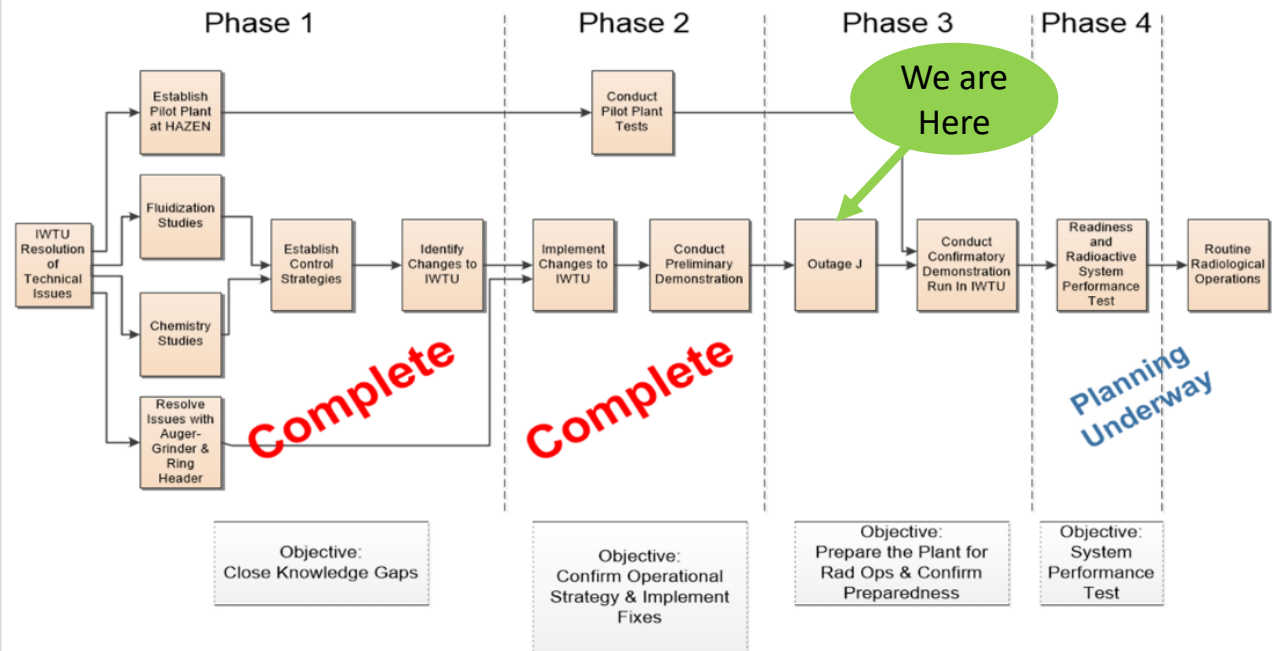
- Waste disposition
 - Discussing RWMC 2028 closure internally for feasibility
 - Averaging 68% of available shipments to WIPP from Idaho
 - Sludge processing - 412 m³ remaining
 - RCRA closure of retrieval enclosure
- CERCLA
 - Waste exhumation, 0.21 acres remaining
 - 5-year review approved
 - Expansion of Idaho CERCLA Disposal Facility (ICDF)
- Spent Nuclear Fuel
 - Packaging demonstration project discussions
 - Continued wet to dry transfers
- Calcine
 - Retrieval systems development and testing
 - Analysis of Alternatives for processing



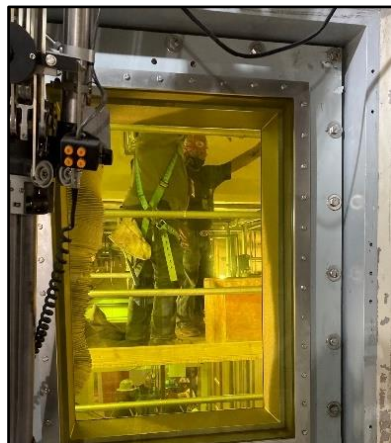
ARP IX Exhumation



Sodium-Bearing Waste



Programming robot points



Workers setting up scaffolding inside IWTU Can Fill Cell 1



Wet decon control tubing installation inside pipe chase (Pre-COVID)



EM Environmental Management

safety ❖ performance ❖ cleanup ❖ closure

Idaho Cleanup Project

Plans for Remainder of 2021

- Waste disposition
 - Sludge processing
 - Waste certification and shipping
 - RCRA closure
- CERCLA
 - Buried waste exhumation
 - ICDF expansion
- Spent Nuclear Fuel
 - Continue wet to dry transfers
 - Fuel transfers from generation 1 to generation 2 vaults
- Calcine
 - Retrieval systems development and testing
 - Path forward based on Analysis of Alternatives



AMWTP Pad 1
RCRA Closure
Core Sampling



CPP-749, Underground Vault Storage



Summary

- Committed to safe and sustainable operations in COVID environment
- IWTU preparing for readiness assessment and confirmatory run
- Transuranic waste continues steady progress
- Buried waste exhumation on track to complete well ahead of the 2023 regulatory milestone
- Strong engagement between DOE and the State of Idaho supports significant cleanup progress

