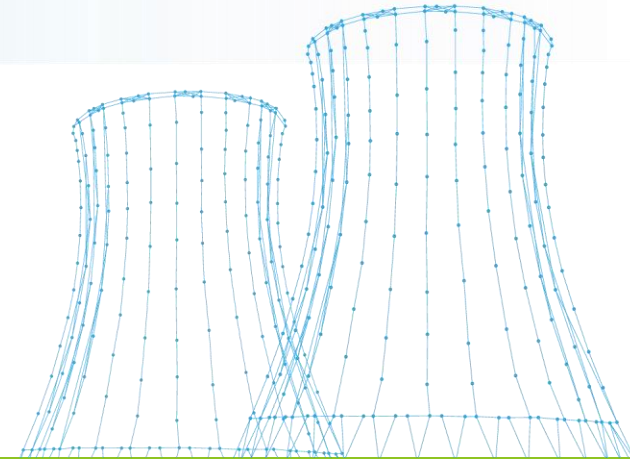




Net-Zero INL: Leading by Example to Change the World's Energy Future

August 2021

Dr. John Wagner
Laboratory Director



NET-ZERO

INL Idaho National Laboratory

Why net-zero INL

- Net-zero aligns with our nuclear, other clean energy, and security mission and vision.
- INL's site characteristics and operations make it a highly relevant demonstration site; representative of a city or county.
- INL will lead by example; lessons learned can inform best-practices for others.
- Net-zero aligns with DOE priorities.



605

Total vehicles



5,224

Employees



320

DOE-owned buildings
& trailers

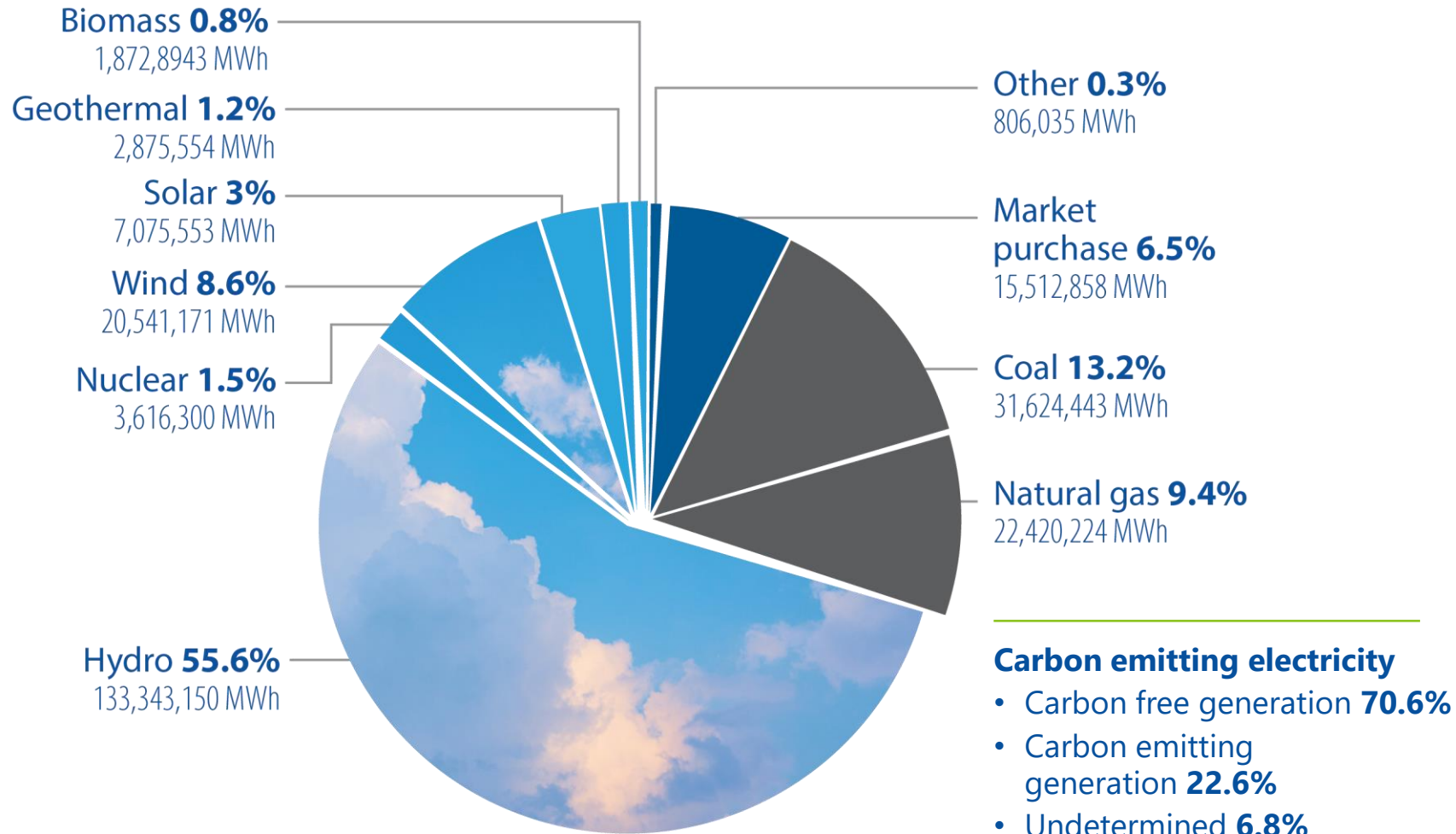


27.3

MW purchased
in FY 2020



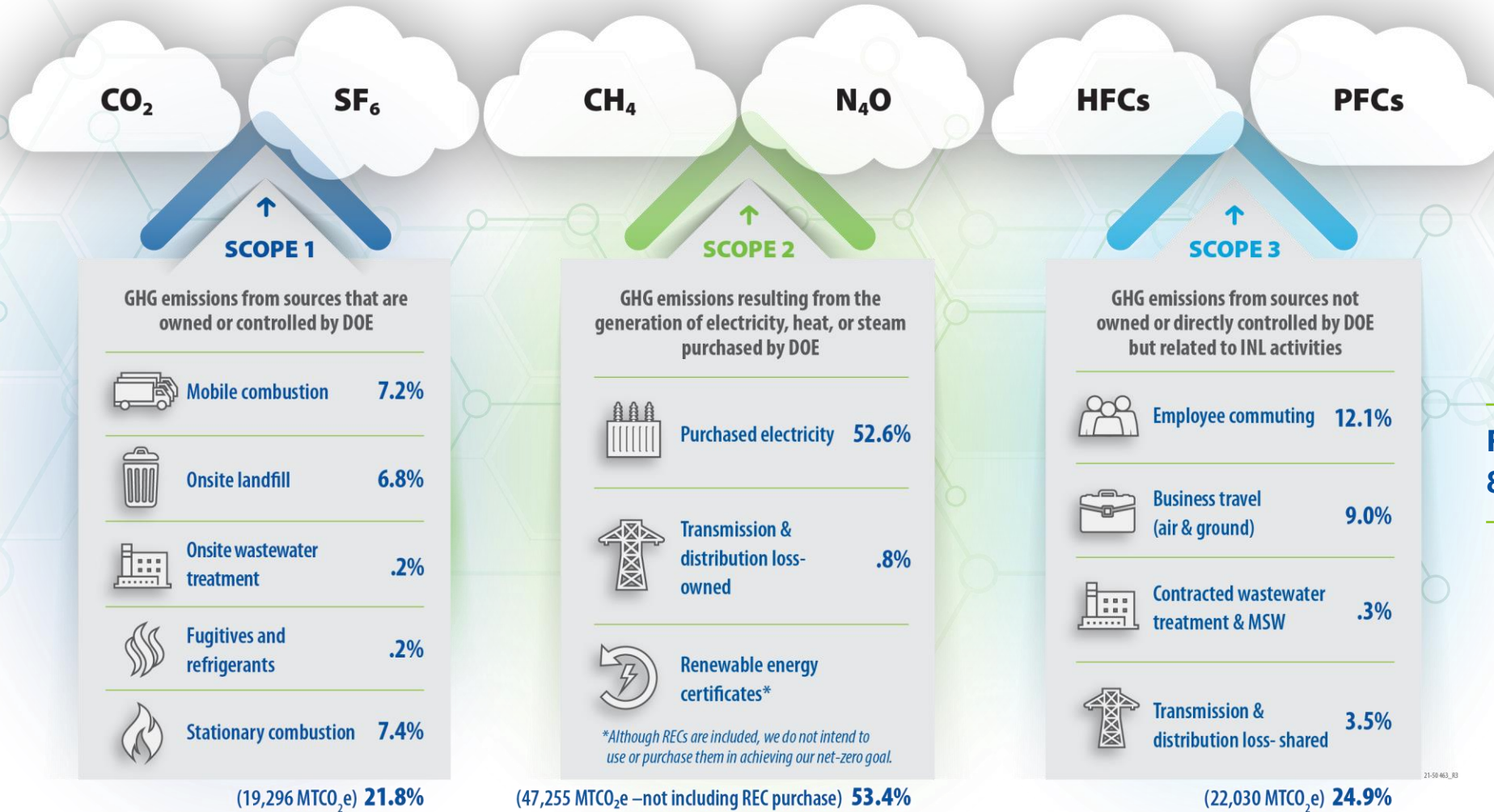
Electricity energy mix



Electricity providers

- Idaho Power **79%**
- Idaho Falls Power **21%**
- Fall River Electric **<1%**
- Rocky Mountain Power **<1%**

INL's Scope 1, 2 & 3 carbon emissions (FY2019)



Our approach to net-zero

Eliminate Scope 1 & 2 emissions

Reduce Scope 3 emissions to extent possible, consider carbon capture to offset

Reduce energy use and waste generation

Increase nuclear, clean energy, and security mission impact

Partner: DOE, national labs, industry, universities, other regional stakeholders

Align our research and operations – integrate net-zero into all decision-making and funding opportunities

Influence and incentivize staff behaviors

Won't rely on Renewable Energy Certificates or offsets

INL net-zero road map: the path to net-zero by 2031



Strategic Approach

- Avalanche Method: Tackle largest contributors first
- Minimize reliance on RECs
- Lead the way: Demonstrate new technologies where possible

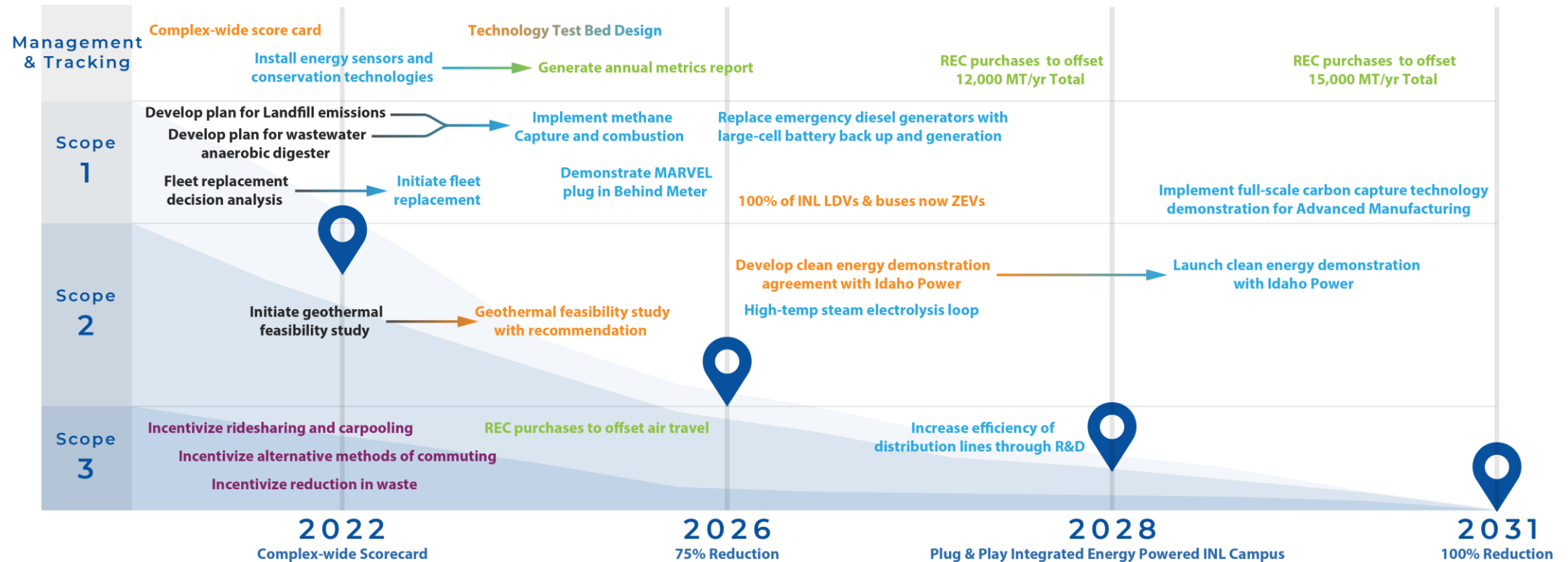
Legend

- Policy/Procedure
- Culture/Behavior
- Technology
- REC Purchase



Goals and Milestones

- 2022: Complex-wide scorecard
- 2024: Install energy sensors and conservation technologies
- 2024: Implement a Technology Test Bed
- 2025: Achieve 75% reduction and 2031: 100% reduction



Community and stakeholder engagement

INL will engage the community through:

- Statewide town halls, news feature stories, op-eds, etc.
- Roundtables with key community and business leaders.
- Meetings with nonprofits across Idaho.
- Regional partnerships

INL can be a resource in Idaho for entities that want to reduce their carbon emissions.

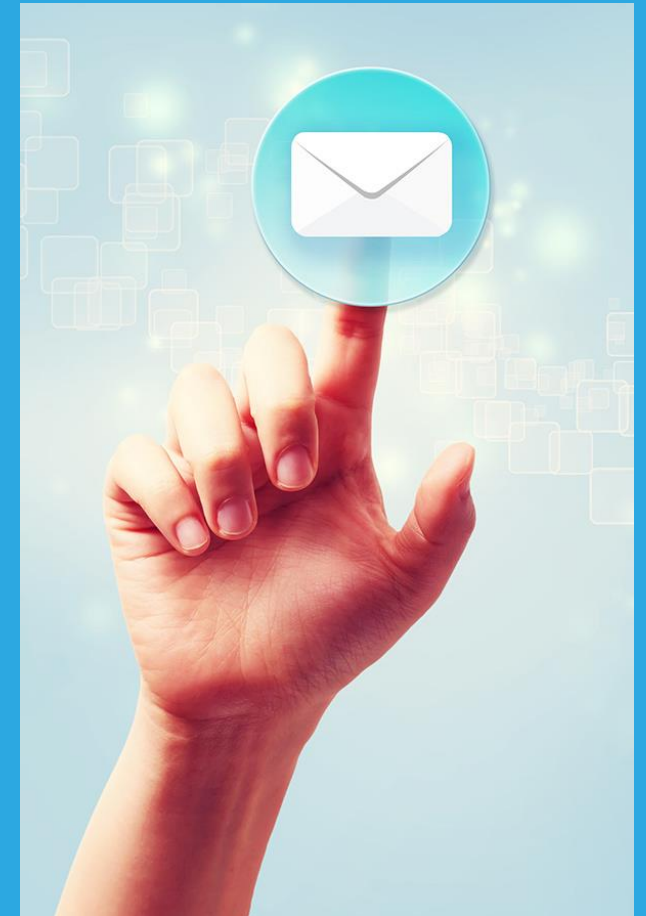
Potential partners

- Nearby cities
- Regional economic development organizations
- Local and statewide colleges and universities
- Regional and statewide environmental and conservation organizations
- Native American tribes.



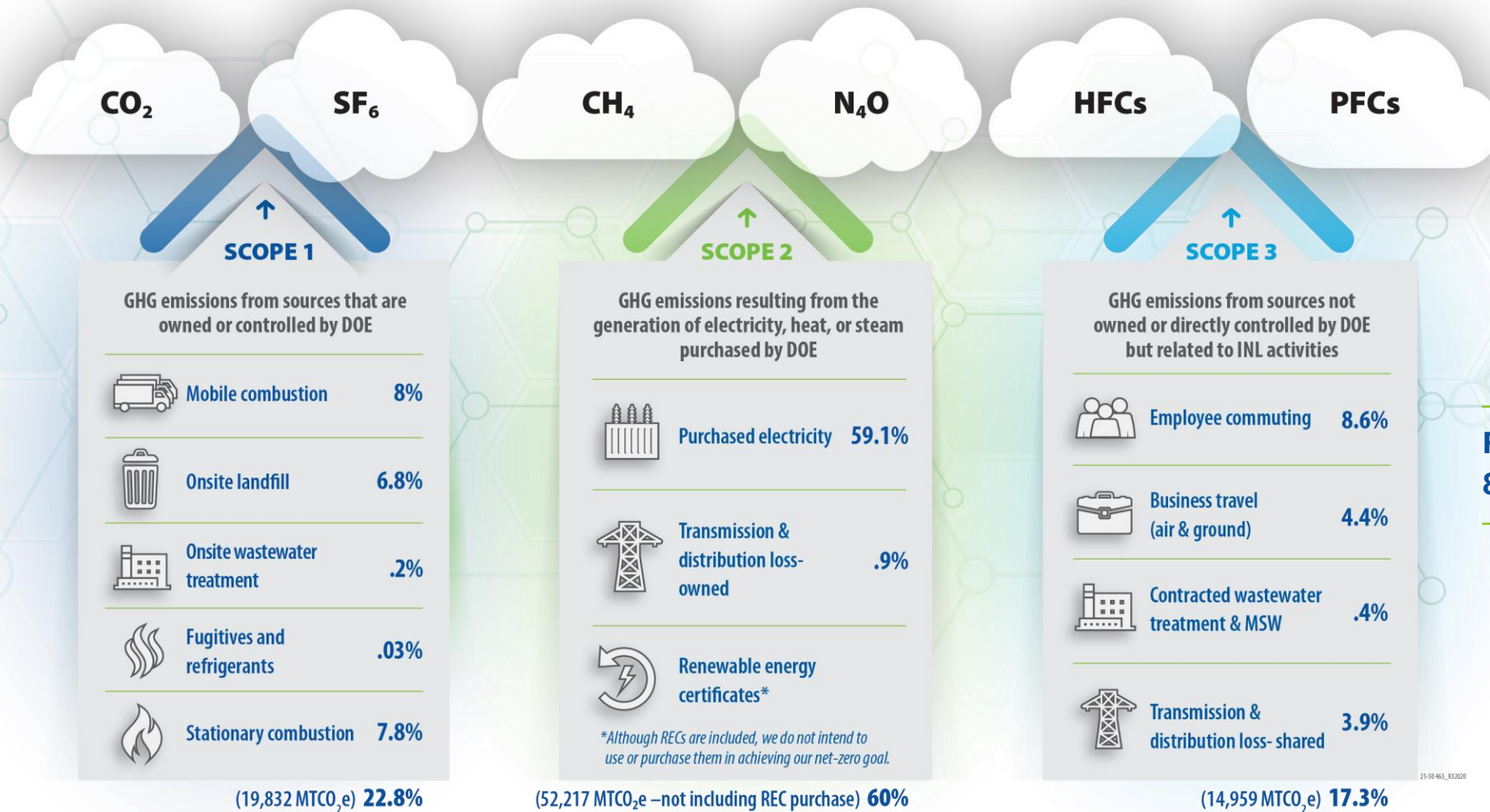
Contact

Dr. Todd Combs
Associate Laboratory Director for Energy &
Environment Science and Technology
Acting Net-Zero Director
Todd.combs@inl.gov

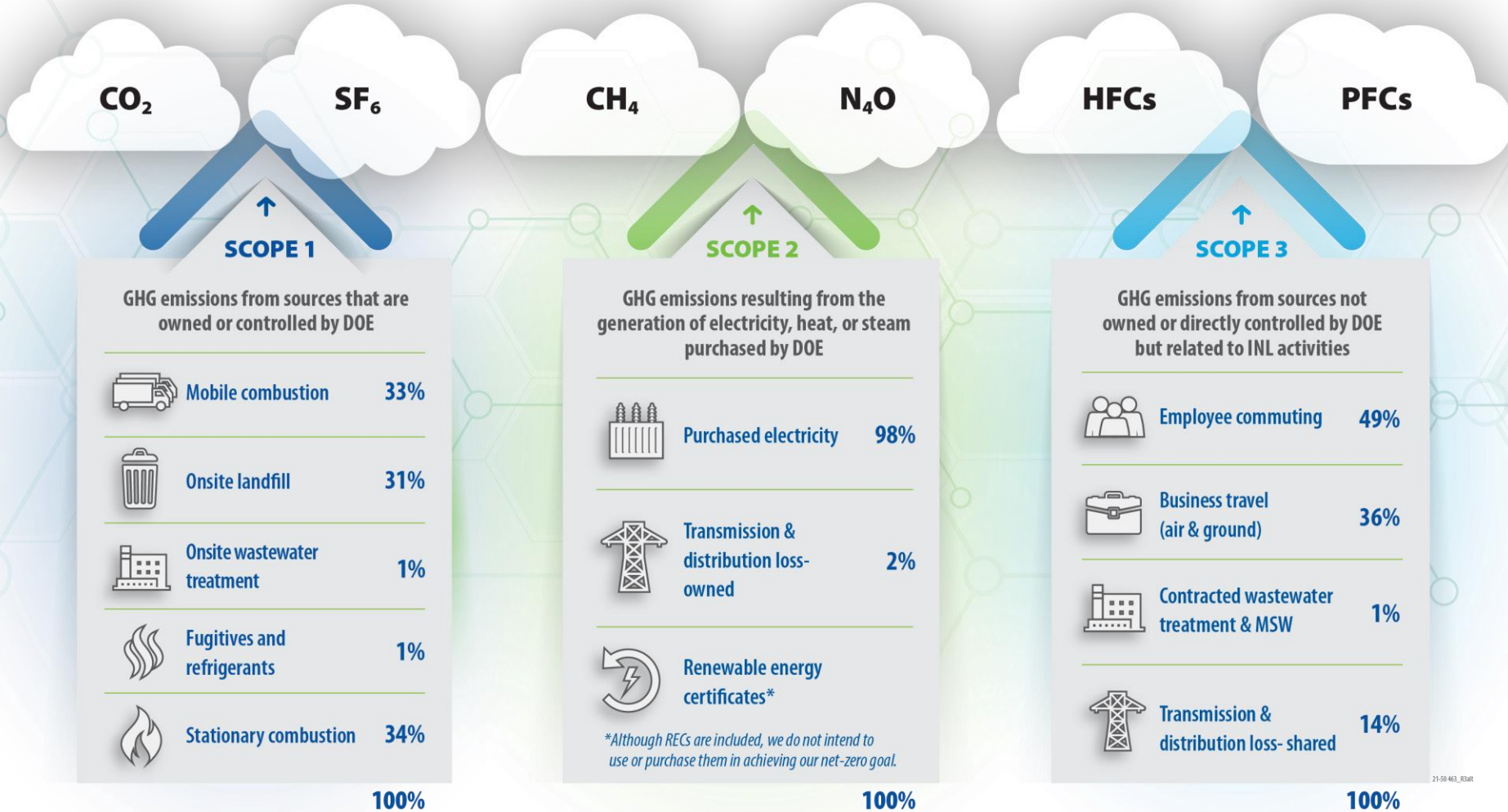


Backup Slides

INL's Scope 1, 2 & 3 carbon emissions (FY2020)



INL's Scope 1, 2 & 3 carbon emissions (FY2019)



INL's Scope 1, 2 & 3 carbon emissions (FY2020)

